

STATION PLACE TRACKS OF LIFE

628 OLD NORWOOD RD, HAVELOCK, ON, K0L 1Z0



UPCOMING EVENTS



Art Gallery Showing June 12th, 2:30pm

This month we welcome friends and family to join us for our in-home art gallery! Join us this afternoon to enjoy the multi-media arts created within our halls, as well as our children’s colouring contest with art from local little ones!

Laugh & Learn

June 11th, 10:30am



We excitedly welcome the Havelock Centre for our first intergenerational program! We can’t wait to enjoy some berry-wonderful company.



Father’s Day Social

June 21st, 2:30pm

We will be celebrating all the father figures that have helped us along the way with a “Dads and Donuts” party to say hats off to our fantastic fellas!



Summer Starts Here

Welcome to the first official “Summer Issue” of Station Place Tracks of Life! As the sunshine and warmer days arrive here in Havelock, we are excited to share all the wonderful activities and events planned for this summer at our home. From outdoor gatherings and live entertainment to special celebrations, gardening, barbecues, and family visits; the season brings many opportunities for fun, connection, and creating meaningful memories together. We look forward to enjoying the summer spirit with our residents, families, staff, and volunteers, and hope everyone has a safe, joyful, and memorable season ahead.

Joke of The Month

Knock, knock!

Who’s there?

Berry

Berry who?

Berry glad you stopped by for a joke!



“And since all this loveliness cannot be Heaven, I know in my heart it is June.” — Abba Woolson

Administrator’s Message – June 2026

June is a meaningful month in long-term care.

In Ontario, June is Seniors Month, a time to recognize and honour the older adults who have helped shape our families, our communities, and our province. At Station Place, we have the privilege of seeing those contributions every day through the stories, experiences, humour, resilience, and wisdom of the residents who call this home.

As the warmer weather continues, we are also looking forward to more time outdoors, more visits, and more opportunities for residents, families, staff, and volunteers to enjoy the season together. These simple moments matter. A walk outside, a visit on a sunny afternoon, a shared laugh, or time spent with family can make a real difference in the day.

Father’s Day also falls in June, and we will be thinking of the fathers, grandfathers, great-grandfathers, stepfathers, uncles, brothers, and father figures who have played such important roles in the lives of those around them. For some, the day is joyful; for others, it may bring reflection or mixed emotions. However the day is experienced, we want to acknowledge it with care and respect.

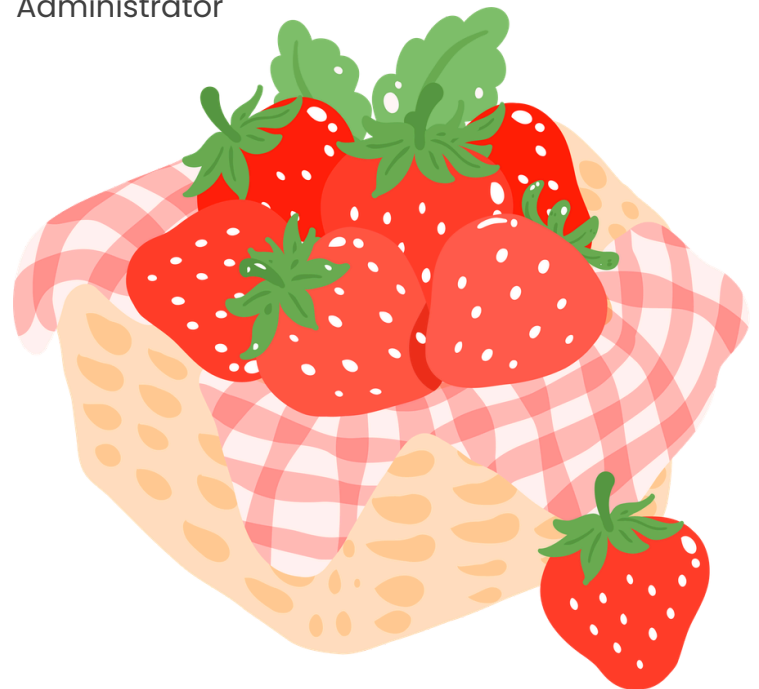
Behind the scenes, our team continues to focus on the things that matter most: safe care, dignity, cleanliness, comfort, infection prevention, and creating an environment that feels welcoming and well cared for.

These are not small things. They are the daily details that help make Station Place feel like home.

As always, thank you to our staff for the care and commitment they bring each day, and thank you to our residents and families for continuing to place your trust in us.

Sincerely,

Michael O’Keeffe
Administrator



Special Themes in June

The SP Life Enrichment team loves a themed day! Join us in celebrating these special days:

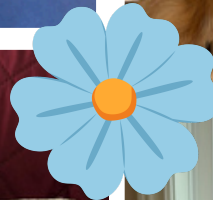
- June 7th - Canadian Armed Forces Day
- June 8th - World Ocean's Day
- June 21st - Father's Day

June is also ALS Awareness Month, Pride Month, and Indigenous History Month



Mother's Day

May was a month for the girls! For Mother's Day, we celebrated our beautiful women with a high tea event and sunhats for all!





Staff Spotlight



We Love Our Nurses & PSWs!

Last month we celebrated our care team with an extra special appreciation week. Staff enjoyed days to dress on theme, including pyjama day or tie dye day! Paired with a fancy hydration station, coffee bar, and sweet treats, we made all the stops for our spectacular staff! Station Place is very proud to have a care department so dedicated to maintaining a positive and supportive environment for all.

Summertime Safety

Fun in The Sun

Dress Light

Wear light & breathable clothing

Time it Right

Avoid midday heat

Hydrate

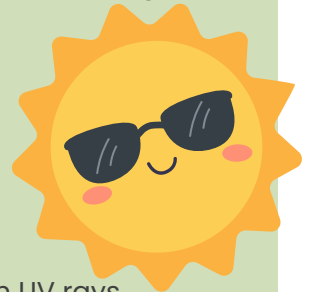
Drink water

Sunscreen

Protect your skin from UV rays

Rest Frequently

Take regular shade breaks



IPAC Tip of The Month

An average person touches their face approximately 23 times every hour, making timely and consistent hand hygiene essential for staying healthy!



Safety Update

Fire Safety Reminder – Clear Spaces

Fire safety is something we take seriously every day at Station Place.

Families and visitors can help by keeping hallways, exits, resident room entrances, and common areas clear of items that could block staff or emergency responders. Please avoid placing bags, walkers, boxes, furniture, or other belongings in corridors or near doorways. Clear spaces help keep everyone safe.

Fire doors must never be propped open, wedged open, or blocked. These doors are an important part of the building's fire safety system and are designed to help protect residents, staff, and visitors.

If the fire alarm sounds while you are visiting, please remain calm and follow direction from staff. Staff are trained on emergency procedures and will provide direction based on the situation. Please do not use elevators during a fire alarm unless directed by emergency personnel or staff.

Small details, such as clear hallways, closed fire doors, and accessible exits, make a big difference in emergency readiness. Thank you for helping us maintain a safe home for everyone.

**Calling Students!**

If you are or know a student looking for fun community involvement opportunities, consider volunteering with us! Contact Life Enrichment for more info!

**Promoting Inclusion & Togetherness:**

June is popularly celebrated as "Pride Month". At the heart of Pride Month is the celebration of authenticity, acceptance, and community. Together, we continue to create a warm, welcoming, and inclusive environment where everyone feels valued, respected, and supported. Pride is also an opportunity to recognize the importance of kindness, compassion, and connection in helping every person feel a true sense of belonging within our community. Throughout the month, we encourage everyone to find small ways to share kindness, celebrate love, and help make our community feel welcoming for all.

IPAC Update

Hand Hygiene

Despite the lack of cold weather and snow, infection prevention continues to be of utmost importance for resident and family safety. We ask that you please continue to monitor for symptoms of illness, follow all PPE and isolation signage carefully, and practice proper hand hygiene and respiratory etiquette when you visit with loved ones. Hand hygiene remains one of the most effective ways to prevent the spread of infections and decrease chances out outbreaks from occurring. Feel free to utilize our many hand sanitizers or hand wash sinks!

Residents in Long-Term Care homes are eligible to receive two COVID vaccines a year – once in the fall and again in the spring. Our COVID vaccine clinics for residents are planned for mid-June. Phone calls to POAs are in progress for consent to vaccination. If you have any questions or concerns, please reach out to our IPAC Lead Sarah Reesor.

Thank you for your continued commitment to keeping our residents, staff, and community safe and healthy!



Meet Our Management Team

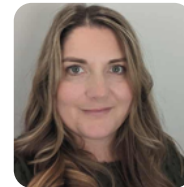
We're proud to introduce some of the compassionate professionals who will be supporting our residents, family, and staff every day:



Michael O'Keeffe - Administrator



Angel Dexter - Behavioural Supports Coordinator



Joanne Elliott - Director of Resident and Family Services



Tori McEwen - Director of Care



Sarah Reesor - Infection Prevention and Control Lead



Laurie Shoemaker - PSW Supervisor



Amanda Appelman - Associate Director of Care



Emily Gerow - Life Enrichment Coordinator



Kyla Brown - Life Enrichment Coordinator



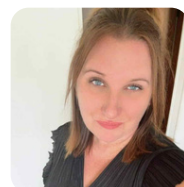
Sarah Vos - Director of Dietary Services



Candace Ball - Office Manager



Laurie Martin - Environmental Services Supervisor



Cortni Buchholz - Social Service Worker



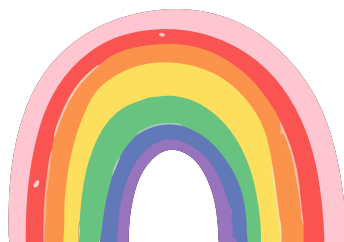
Melanie Morrison - Clinical Assessment Coordinator



Avneet Kaur - RAI Coordinator

We are so excited to welcome our residents and their loved ones! We are committed to making our residents feel comfortable and truly home here at Station Place LTC.

Warmly,
The Station Place Team



Stay Connected

Have a question? Want to share feedback or ideas?
Follow us on Facebook: **Station Place Long Term Care Home**
Or contact us using the information below: