

STATION PLACE TRACKS OF LIFE

628 OLD NORWOOD RD,
HAVELOCK, ON, K0L 1Z0



UPCOMING EVENTS



Cinco De Mayo
Tuesday May 5th - 2:30

Early this month we will be celebrating Mexican culture and hosting a Cinco De Mayo social! Join us for a piñata party!



Mother's Day Tea
Sunday May 10th - 2:30pm

To celebrate Mother's Day, we will be hosting a High Tea. Join us with a raised pinky to cheers to the women who have shaped our lives and raised generations.



Lavender Spa
Thursday May 14th - 2pm

This month we welcome Bonnie from Woodland North Lavender Farm back to continue the floral feature, now with a spa and wellness twist.



Monthly Birthday Party
Friday May 29th - 2:30pm

Join us for our monthly birthday party and celebrate all the May Babies with cake and dancing!



May-be Summer is Coming

May is here and the flowers are near! We are very excited for the warm weather and enjoying the many wonders of Canadian spring and early summer seasons. In our home, May offers many opportunities to come together, whether through outdoor strolls, seasonal activities, or shared laughter with friends and family. We also take time to recognize meaningful occasions such as Mother's Day, honoring the care, strength, and love that shape our community.

We look forward to another month filled with connection, comfort, and joy. Thank you to our residents, families, and staff for making our home such a special place to be.

Joke of The Month

If April showers bring May flowers,
what do May flowers bring?



Pilgrims



“I’ve got sunshine on a cloudy day. When it’s cold outside, I’ve got the month of May.” – Smokey Robinson

Administrator’s Message – May 2026

May brings a welcome change of pace at Station Place. With warmer weather and longer days, we’re starting to see more time spent outdoors, more visits from family and friends, and more opportunities to simply enjoy being together.

Mother’s Day is always a meaningful occasion in our lives. It gives us a chance to recognize and celebrate the mothers, grandmothers, and great-grandmothers who have played such an important role in the lives of those around them. We will be marking the day here at Station Place, and I encourage families to visit if they are able and spend some time together. Our wonderful Life Enrichment staff are organizing a high tea event. More details inside this newsletter.

With more visits and celebrations taking place, I also want to touch on something practical. We know how important it is to capture special moments, and families are encouraged to take photos with their loved ones. At the same time, we ask that photos and videos include only your own family member, and that other residents are not visible in the background. This helps us respect the privacy and dignity of everyone who calls Station Place home.

Moments like Mother’s Day, visits with family, and simply spending time together are a big part of what makes this environment feel like more than just a place to live. They are part of what makes it feel like home.

As always, I want to thank our staff for the care they provide each day, and our residents and families for the trust they place in us.

Sincerely,

Michael O’Keeffe
Administrator





Photo Protocol

Gentle reminder to all to use consideration when taking photos and videos within the home. Not all individuals wish to have their photo on the internet, therefore we ask all to be mindful of this. Additionally, if you or your loved one wishes to be featured in the newsletter we encourage you to reconsider consent for media release.



Spring Cleaning



We will have window cleaning occurring on May 5th throughout the day. If you look outside don't be surprised to see somebody washing the windows!

Fire Safety: What Happens During a Fire Drill?



Last month, we shared what to do if a fire alarm goes off. This month, we wanted to explain what you may notice during one of our regular fire drills.

At Station Place, fire drills are conducted on every shift, every month. These drills are required and help ensure our team is always prepared to respond quickly and safely.

During a fire drill, you may hear the alarm sound or notice staff responding with urgency. Residents will be supported and reassured by staff throughout the process.

If you are visiting during a drill:

Please remain calm

Follow any directions provided by staff

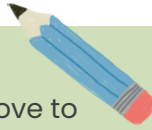
Avoid using elevators unless directed

Keep hallways and exits clear

These drills are an important part of keeping everyone safe and ensuring we are always ready in the event of a real emergency.



We are drawn to you!



Calling all artists! Station Place would love to celebrate our community of artists by hosting a pop-up Art Gallery in June. From fibre arts, visual arts, music, and language, we are blessed to be home to many incredibly talented individuals. Our Life Enrichment team is planning an exhibition to display many of the beautiful pieces we have seen created here. If you have art created by a Station Place resident that could be included in a temporary indoor Art Gallery, please contact Life Enrichment to have it featured.



Residents' Council Update



Inhale Spring Freshness, Exhale Joy

We are all eager to create and personalize our outdoor space to enjoy with each other. We want to remind residents, families, and visitors that outdoor space is for everybody to enjoy. Residents are welcome to have bird feeders, plants, or decor outside if they choose. Keep your eyes peeled for floral features and winged friends around the home in the coming few months.



Congratulations to our newest President of Residents' Council; Carrie P!



Attention All Rate Reduction Residents and Family Members! It's Time to Renew your Rate Reduction Application!

As the deadline to file your income tax return for 2025 was April 30, 2026, Canada Revenue Agency will be mailing out 2025 Notice of Assessment. Please deliver or mail to Station Place ATT: Office Manager as soon as possible so that your rate reduction application can be processed for the next renewal period from July 1, 2026 to June 30, 2027.

We require this documentation to complete their rate reduction application which must be submitted to the Ministry of Health & Long Term Care every year so that they can continue receiving their rate reduction. Their current rate reduction is only effective until June 30, 2026.

Thank you, Candace Ball



○ 628 OLD NORWOOD RD, ○
HAVELOCK, ON, K0L 1Z0



Community Corner

A Community United Through Love & Chocolate

Everybody here at Station Place was incredibly impressed with the wonderful turnout to our first annual Easter Egg Hunt last month. For a small town, Havelock truly has a huge heart. Leading up to Easter, residents took turns to play the Easter Bunny role; carefully preparing each egg, assembling four bicycles, and perfecting every little detail along the way. The big day came with strong winds, but that couldn't sweep away our smiling faces!

Our property became bustling with an amazing amount of community members, families, and kiddos ready to hunt! With four age groups ranging from 0-15 years old, each group faced off to find a total of 20 000 eggs. An extra big congratulations to our raffle winners, who rolled away on brand new bicycles! We were so 'hoppy' to have you all here, and we 'egg-erly' await our next community event.





Meet Our Management Team



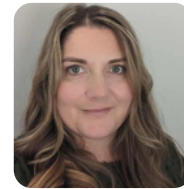
We're proud to introduce some of the compassionate professionals who support our residents, family, and staff every day:



Michael O'Keeffe - Administrator



Angel Dexter - Behavioural Supports Coordinator



Joanne Elliott - Director of Resident and Family Services



Tori McEwen - Director of Care



Sarah Reesor - Infection Prevention and Control Lead



Laurie Shoemaker - PSW Supervisor



Amanda Appelman - Associate Director of Care



Emily Gerow - Life Enrichment Coordinator



Kyla Brown - Life Enrichment Coordinator



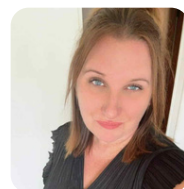
Sarah Vos - Director of Dietary Services



Candace Ball - Office Manager



Laurie Martin - Environmental Services Supervisor



Cortni Buchholz - Social Service Worker



Melanie Morrison - Clinical Assessment Coordinator



Avneet Kaur - RAI Coordinator

We are so excited to welcome our residents and their loved ones! We are committed to making our residents feel comfortable and truly home here at Station Place LTC.

Warmly,
The Station Place Team



Stay Connected

Have a question? Want to share feedback or ideas?
Follow us on Facebook: **Station Place Long Term Care Home**
Or contact us using the information below: