

# STATION PLACE TRACKS OF LIFE

★ ★ ★ ★ ★ ○ 628 OLD NORWOOD RD, HAVELOCK, ON, K0L 1Z0 ○ ★ ★ ★ ★ ★



## UPCOMING EVENTS



**Canada Day**  
July 1<sup>st</sup>, 2:30pm

O Canada! Today we celebrate the country we call home with cold drinks, hot poutine, and classic Canadian trivia!



**Caribbean Day**  
July 6<sup>th</sup>, 2:30 pm, & 6:15 pm

Next stop; The Caribbean! We have a full day's itinerary planned; with steel drum entertainment in the afternoon and travelogue in the evening to continue our learning!

● **Classic Car Show**  
July 8<sup>th</sup>, 1-4pm

Vroom Vroom! This afternoon we take a trip down memory lane with a car show and BBQ in our parking lot!

\*weather permitting



## July, Please Don't Fly By!

The summer season is officially here, with hot sun and longer days; the perfect time to enjoy the company of those we love. July is also a time to celebrate what it means to be Canadian. Whether sharing stories from years gone by, enjoying favourite summer traditions, or gathering with friends and family for Canada Day festivities, we honour the memories, experiences, and contributions of the residents who have helped shape the communities we call home.

From garden walks and spa days to seasonal celebrations, music, games, and refreshing treats, July is a wonderful time to embrace the warmth and energy of the season. We look forward to sharing many special moments together throughout the month, and creating more cherished summer memories.

### Joke of The Month



Why don't cats like July?

*Because it's the start of the dog days of summer*



## Summer Fun in Full Swing

July brings summer warmth, longer days, and another month of activity, connection, and community at Station Place.

This month, we are especially excited to host our first classic car show on Wednesday, July 8, with the Marmora #7 Classic Cruisers. We are looking forward to welcoming these beautiful vehicles to Station Place and giving residents, families, visitors, and team members an opportunity to enjoy an afternoon of memories, conversation, and summer fun. Further details about the car show are included inside this newsletter.

Classic cars have a wonderful way of bringing people together. For many residents, they may bring back memories of first cars, family road trips, Sunday drives, drive-in theatres, music from earlier decades, or simply the excitement of seeing a well-loved vehicle restored and cared for. Events like this give us another opportunity to celebrate the life stories, interests, and memories of the people who live at Station Place.

At Station Place, we also recognize that every resident, family member, visitor, volunteer, and team member brings their own experiences, traditions, abilities, beliefs, and background to our home. These differences are part of what makes our community stronger. We are committed to maintaining a home where everyone is treated with dignity, kindness, inclusion, and respect.

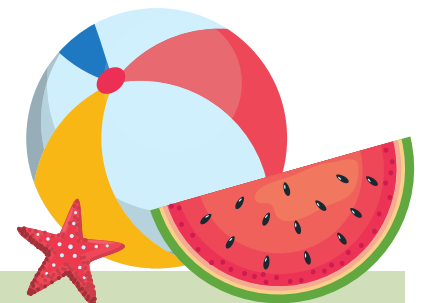
Respect is shown in many ways; through the words we choose, the way we listen, the time we take to understand one another, and the care we show in our daily interactions. Whether we are sharing a meal, attending an activity, visiting with family, or supporting one another through the day, each person deserves to feel welcome, valued, and safe.

As we move through the summer months, we thank our residents, families, volunteers, and team members for continuing to help make Station Place feel welcoming, active, inclusive, and connected. Whether it is through a special event, a visit, a shared story, or a simple moment of kindness, each of these connections helps build the life of our home.

We look forward to a great July together.

Michael O'Keefe

Administrator



○ 628 OLD NORWOOD RD, ○  
HAVELOCK, ON, K0L 1Z0



### Summer Days

By Catherine Pulsifer

The sun shines bright, the  
skies are blue,  
Each moment feels so fresh,  
so new.

A gentle breeze through trees  
does play,  
Bringing joy to every day.

Laughter echoes, fields in  
bloom,  
Chasing away the smallest  
gloom.

Summer days, a gift so sweet,  
A precious time that can't be  
beat.



### Winning Artists

Congratulations to the wonderful winners!



Thank you to all our little local artists for participating in our Summer Colouring Contest!





Holiday Highlights

### We Donut Know What We'd Do Without You!



Last month we celebrated all the father figures and male role models in our lives with a Day of Dudes! Starting with hand-delivered gifts and men's advice, followed by an afternoon of donuts and dad jokes.



Safety Spot!

### July Resident Fire Safety Tip

**Keep hallways and doorways clear**

One important way everyone can help with fire safety is by keeping hallways, doorways, and exits clear.

In an emergency, staff may need to move quickly through the home to check on residents, close doors, bring equipment, or help residents move safely if needed. Items left in hallways or near doorways can slow down this response and may create a tripping hazard.

Residents, families, visitors, and team members can all help by making sure walkers, wheelchairs, bags, decorations, and personal items are not blocking hallways, room entrances, fire doors, or exit routes.

Clear pathways help keep everyone safer, not only during a fire alarm, but every day.





Exciting Activities

## Scoops of Summer Fun

Get ready for a day of sunshine, smiles, and summer fun! July 21<sup>st</sup> in the afternoon residents, families, and staff will come together to celebrate our Summer Fun Day with exciting games, great music, delicious treats, and plenty of opportunities to connect and make memories. We look forward to sharing laughter, friendly competition, a few water balloons, and creating a fun-filled day for everyone to enjoy. We can't wait to celebrate summer with you!

## Gallery of Goodies



We want to extend a thank you to all the visitors who took time to tour our Resident Art Show last month. Station Place was bustling with artists and attendees alike, enjoying a wide variety of art pieces created by our extremely talented residents, as well as colouring contest submissions from local young artists. From paints and poems to fiber arts and origami, Station Place is surely the stop for beauty and talent!



Staff Update

## New to IPAC



Please join us in giving a warm congratulations to Grace on her new role as interim IPAC lead! We're excited to see Grace step into this new position and become part of our management team. Her positive attitude, dedication, and willingness to support others have made her a valued member of our team, and we know she will bring those same qualities to her new role.



## Our Management Team

We're proud to introduce some of the compassionate professionals who will be supporting our residents, family, and staff every day:



**Michael O'Keeffe** - Administrator



**Angel Dexter** - Behavioural Supports Coordinator



**Joanne Elliott** - Director of Resident and Family Services



**Tori McEwen** - Director of Care



**Grace Guillemette** - Infection Prevention and Control Lead



**Laurie Shoemaker** - PSW Supervisor



**Amanda Appelman** - Associate Director of Care



**Emily Gerow** - Life Enrichment Coordinator



**Kyla Brown** - Life Enrichment Coordinator



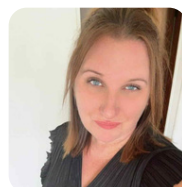
**Sarah Vos** - Director of Dietary Services



**Candace Ball** - Office Manager



**Laurie Martin** - Environmental Services Supervisor



**Cortni Buchholz** - Social Service Worker



**Melanie Morrison** - Clinical Assessment Coordinator



**Avneet Kaur** - RAI Coordinator

We are so proud to welcome our residents and their loved ones! We are committed to making our residents feel comfortable and truly home here at Station Place LTC.  
Warmly,  
**The Station Place Team**



## Stay Connected

Have a question? Want to share feedback or ideas?  
Follow us on Facebook: **Station Place Long Term Care Home**  
Or contact us using the information below: