

STATION PLACE TRACKS OF LIFE

○ 628 OLD NORWOOD RD,
HAVELOCK, ON, K0L 1Z0 ○



UPCOMING EVENTS

First Annual Pie Competition
January 23



Join us on National Pie Day as our home areas submit fresh pies to a panel of judges for a chance to win.

 **Around the World - Italy**
January 14th

Up, up, and away we go! January we're launching a new monthly travel program to 'visit' and learn about countries world-wide. Departure is 10:30am in the fireside lounge, for a tour of Italian music, history, and food!

Line Dancers

January 20th

Get your toes tapping this afternoon with a line dancing party presented by local dancers!

Special Socials

Every Friday afternoon!

Join us in the fireside lounge Friday afternoons for large group socials, including ice fishing, birthday parties, and more!



A New Year is Here!

January brings a gentle kind of magic—a quiet invitation to pause, reflect, and step into a fresh chapter. Inside our long-term care home, this feeling is echoed in the meaningful moments we share: warm conversations, familiar routines, and the simple joys of being together.

As we begin the year, we're grateful for the connections that make our community so special. Our residents inspire us daily, our families strengthen us with their love and support, and our dedicated staff help create a place where everyone feels cared for and valued. In this issue, we share highlights from recent celebrations, a look at upcoming programs, and reflections on the many ways our community continues to grow.

May this new year bring comfort, joy, and a sense of togetherness—one heartfelt moment at a time

Joke of The Month

What do you call a snowman without a carrot?

Nobody nose!



Administrator's Message for 2026



The start of a new year always brings a pause. January gives us a moment to look back at what we've come through together and to think about what we want the months ahead to look like.

Working in long-term care is not easy. The days can be busy, unpredictable, and emotionally demanding. What makes the work possible, and meaningful, is the people who do it. I want to sincerely thank our staff for the care, patience, and professionalism you show every day. The small things you do matter more than you may realize, and they are noticed.

To our residents, thank you for allowing us to be part of your daily lives. Your stories, humour, and resilience are what give this place its heart. And to our families, thank you for your trust and for working alongside us. Your questions, feedback, and involvement help us continue to improve and do better.

As we move into 2026, our focus remains simple and steady: providing safe, respectful, resident-centred care while continuing to strengthen teamwork and communication across the home. Progress doesn't always come in big leaps ... often it's built through consistency, honesty, and a willingness to keep learning together.

Winter can be a long season, especially here in Ontario. I encourage everyone to look out for one another, be patient with yourselves and each other, and take pride in the important work being done within these walls every day.

Thank you for being part of the Station Place community. I look forward to what we will continue to build together in the year ahead.

Michael O'Keeffe

Administrator

Station Place Long-Term Care Home





A Note to My Neighbours

By Dave M.

As chilly winter air dances through Havelock, and snowflakes gently decorate the world outside, Station Place LTC stands tall — full of warmth, hope, and possibility.

For many, it's more than just walls and windows; it's a new home, and the heart of a blossoming community. The corridors may smell of fresh paint, and the lounge chairs may be waiting for a good story or two. Here, we find ourselves surrounded by new neighbors and soon enough, new friends.

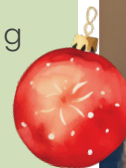
There's a special kind of excitement in the air, the kind that comes with discovering someone who shares your love of games or swapping tales about the days when a nickel could buy a bag of liquorice at the corner store. 2026 stretches ahead like a blank page, ready to be filled with laughter, learning, and perhaps even a little adventure (who knew bingo night could get so competitive?).

A year for new interests—maybe it's time to pick up painting, join a book club, or master the art of growing the perfect windowsill geranium.

Each day is a fresh chance to create memories, celebrate milestones, and offer a kind word or a caring smile.

At Station Place, we know that a community is built not just from bricks, but from the hearts of the people within. Whether you've just recently moved in, or you're settling into a new routine, remember you are among friends here.

Look out for one another, share a laugh, and treasure the special moments—big and small—that make this place feel like home.





Celebration Section

Holiday Cheer Door to Door

Last month our home faced off in a battle of best door decor to spread holiday joy. Staff, residents, and families alike created festive displays on their doors, and celebratory competition soon followed. From simple and traditional to wacky and wild; decorations were hung throughout the home with care. Visions of sugarplums, grinchies, and llamas, danced in our halls. While every door spread great cheer and laughs, we want to share a special congratulations to our winners!

Thank you to all who participated!

Santa's Stop at the Station

The holiday cheer was certainly here for the season of spirit. Even though our home was visited by an unwanted respiratory visitor, that didn't put a damper on our shine! Staff worked hard to maintain an environment of joy, cheer, and seasonal firsts. With our first Christmas Season (and no chimney) some were worried if Santa would make a stop at somewhere new on his map. But have no fear, Rudolph was here! We were incredibly blessed with holiday cheer and support from our new neighbours and friends. Thank you all for participating and ensuring our first Christmas together was successful, safe, and fun.



Fa La La Llama took home first place! Congratulations to Morgan for the delightful dietary door!

Our reindeer won first place for residents. Congrats to Betty for the darling door!



628 OLD NORWOOD RD,
HAVELOCK, ON, K0L 1Z0



Committee Update



New Year's Notice

A Year for Fun

Station Place happily welcomes the new year as an opportunity to continue growing, making lifelong connections and meaningful memories. We encourage all to be involved in our community here, through committees, volunteering, or attending events within the home. Our monthly program calendars are available physically or digitally, and we hope to see you at our events this year, as we aim to make 2026 a memorable year for all.

Station Place ~ Family Council

JOIN US ON
Monday, February 9th, 2026.
Time: 2:30-3:30 PM
Location: Fireside Lounge

For more information contact
Joanne Elliott
Director of Resident & Family Services
705-740-1690





Meet Our Management Team



We're proud to introduce some of the compassionate professionals who will be supporting our residents, family, and staff every day:



Michael O'Keeffe –
Administrator



Angel Dexter –
Behavioural Supports
Coordinator



Joanne Elliott –
Director of Resident
and Family Services



Tori McEwen – Director
of Care



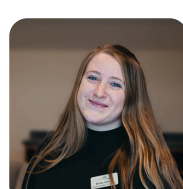
Sarah Reesor –
Infection
Prevention and
Control Lead



Laurie Shoemaker –
PSW Supervisor



Amanda Appelman –
Associate Director of Care



Emily Gerow – Life
Enrichment
Coordinator



Kyla Brown – Life
Enrichment Coordinator



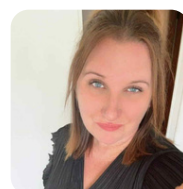
Sarah Vos – Director of
Dietary Services



Candace Ball –
Office Manager



Laurie Martin –
Environmental Services
Supervisor



Cortni Buchholz – Social
Service Worker



Melanie Morrison –
Clinical Assessment
Coordinator



Avneet Kaur –
RAI Coordinator

We are so excited to welcome our residents and their loved ones! We are committed to making our residents feel comfortable and truly home here at Station Place LTC.

Warmly,
The Station Place Team



Stay Connected

Have a question? Want to share feedback or ideas?

Follow us on Facebook: **Station Place Long Term Care Home**

Or contact us using the information below:

628 OLD NORWOOD RD, HAVELOCK, ON, K0L 1Z0

705-740-1690



Alzheimer Society Education Series at Station Place

Second Thursday of the month -
January to April, 2026



Family members and residents of **Station Place** are invited to join educator Kris Van Luven from the Alzheimer Society for these in-person training opportunities.



An Overview of Dementia

Thurs . Jan.8,2026,3 - 4pm

This presentation will build our general understanding of dementia by exploring the difference between changes that come with normal aging and when something is not normal. It also will cover the different types of dementia, progression, the most common symptoms of dementia and their impact on the person with dementia.



Enhancing Communication

Thurs . Feb.12,2026,3 - 4pm

This education session will help care partners, residents, and friends supporting persons with dementia to identify and understand changes in communication that often result from brain changes. Participants will learn tips and strategies for making communication more successful.



Understanding Behaviour Changes

Thurs . Mar.12,2026,3 - 4pm

Alzheimer's disease and other forms of dementia can impact the brain in many ways. As a result of brain changes, people living with dementia may experience physical, emotional, mental, and cognitive changes. They may also experience behavioural changes. The symptoms of dementia can affect how a person will think and act. In this education session, we will explore the most common behaviour changes that can occur in dementia, and some tips and strategies for understanding and addressing them.



Positive Visits

Thurs . Apr.9,2026, 3 - 4 pm

Visiting a person living with dementia can sometimes feel daunting, especially when we may be uncertain about how their changing abilities or communication difficulties may impact on the success and overall enjoyment of the visit. This presentation introduces a "person-centered" approach to visits, including specific tips and considerations to help ensure a positive interaction.

For more information, please contact:
Cortni Buccholtz
spssw@aoninc.com

Alzheimer Society