

STATION PLACE TRACKS OF LIFE

○ 628 OLD NORWOOD RD,
HAVELOCK, ON, K0L 1Z0 ○



UPCOMING EVENTS

Resident and Family Dinner

December 11, 2025

Join us for a special evening to come together, share a delicious meal, celebrate the joy of the holiday season with loved ones and our team, and create cherished moments.

Santa Visits Station Place December 13th

Our elves have been in contact with the big man up north, and we're very excited that Santa Claus will be visiting Station Place before Christmas. Come over to see Santa; he'll be making his list and checking it twice!

Special Socials Every Friday afternoon!

Join us in the fireside lounge Friday afternoons for large group socials, including live music, birthday parties, and more!



Next Stop: North Pole!

Dear Residents, Families, and Friends,

We thank you for checking in with our second issue of Tracks of Life. Station Place has been busy in November, officially reaching full capacity within our home. We are incredibly thankful to be a growing part of the Havelock community, especially during the upcoming holiday season.

As we continue to build a supportive and engaging environment for our residents, we're excited to share recent highlights, upcoming programs, and the meaningful moments that bring our community together. We wish everybody a safe and happy December!

Joke of The Month

Knock, knock!

Who's there?

Ima

Ima who?

Ima dreaming of a white Christmas!



A Season of Joy, Milestones, and Community

As the year draws to a close, Station Place is filled with both gratitude and excitement. Just a few short months ago, we opened our doors and began welcoming our very first residents. Today, our home is bustling with life, laughter, and community — and we are thrilled to share that **as of November 24th, Station Place reached full capacity with all 128 residents now calling our home theirs.** It is an incredible milestone, and one that reflects the hard work, dedication, and warmth shown by our staff, families, and community partners.

Reaching full occupancy so soon after opening is a testament not only to the need for high-quality long-term care in our region, but also to the trust placed in our team by residents and families. Every successful admission, every room made comfortable, and every warm welcome given by staff helped turn our building into the thriving home it is today.

Now, with winter settling in and the holiday season upon us, Station Place is getting ready for our first Christmas together. The home is beginning to sparkle with festive decorations, Christmas trees, garlands, and lights carefully arranged by staff and residents alike. The aroma of holiday baking is already finding its way through the halls, and our Recreation team has been planning a wonderful lineup of December activities — from carol sing-alongs and crafting to special movie nights, a visit from Santa, and a Christmas Day meal that promises to be unforgettable. Look for details in this newsletter regarding a Resident / Family Christmas Dinner that we will be holding on Thursday December 11th.

This season can be especially meaningful in long-term care, where traditions old and new come together. Our staff continue to show heartfelt dedication in making sure every resident feels valued, engaged, and surrounded by festive cheer. Families have also been offering tremendous support, participating in decorating days, dropping off treats, and sharing in the spirit of community that defines Station Place.

As we look forward to our first Christmas at full capacity, we remain focused on the foundation that brought us here: compassionate care, connection, and the belief that every resident's story matters. Thank you to our residents, families, staff, and community partners for your trust and your continued commitment to making Station Place a true home.

On behalf of all of us at Station Place, we wish you **a warm, joyful, and peaceful holiday season.** May the new year bring health, happiness, and continued moments of togetherness.

Sincerely,

Michael O'Keeffe

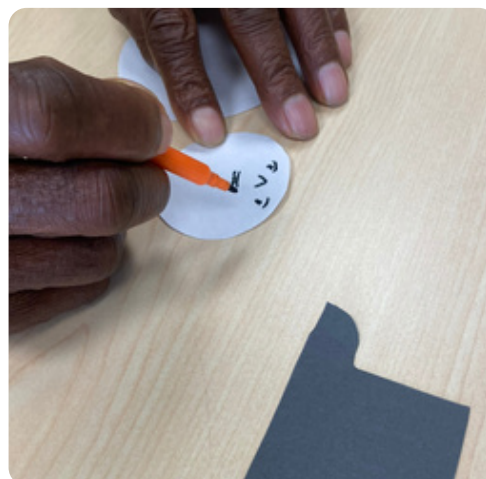
Administrator



Remembrance Day; A Special Thank You

Station Place is grateful to have spent our first Remembrance Day amongst the company of dedicated and compassionate individuals; including volunteers, community members, residents, families, and staff. Most notably, our deepest gratitude is extended to all veterans, who granted us with our freedoms we enjoy today.

Lest We Forget.





Tuck Shop Updates

The Store is Open!

Our Tuck Shop is rolling along the track, and will be featured in the Fireside Lounge on Fridays at 11am until noon. This in-home shop provides an opportunity to purchase goodies, including chocolates, pop, and chips. The Tuck Shop can accept cash, or charge to a residents' Trust Account.

Please see Candace, our office manager, for information regarding Trust Accounts.

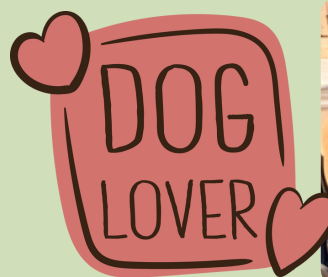
Additionally, for the month of December, residents will be alongside the tuck shop with hot chocolate available for purchase; proceeds going to Residents' Council.

Paws and Policies

Visiting Pets Policy

As part of our visiting pet's policy, we kindly ask that you bring your dog's vaccination records before bringing your dog into the home. Our front desk staff will photocopy your documents and assist you in completing the required form with some additional details.

Thank you for your cooperation in helping us maintain a safe and welcoming environment for all!



Residents' Council Message

Festive Holiday Wishes from the Residents' Council

On behalf of the Residents' Council at Station Place, we are delighted to be celebrating our first festive holiday together in our beautiful new home. We send warm wishes for our very first community Christmas together.

This season marks the start of many treasured traditions at Station Place. As we settle in with caution and grace, each of us brings unique stories, memories, and hopes for the future. Every day, we learn a little more about each other – sharing laughter, kindness, and the warmth of a caring community family.

We wish all residents, staff, volunteers, and loved ones a joyful holiday filled with peace, comfort, and togetherness. May this time be a reminder of the strength and compassion that unite us and the friendships blossoming in our halls.

From our hearts to yours, happy holidays, best wishes, and a Merry Christmas for a wonderful season ahead.

Warmly,

The Residents' Council of Station Place




Holiday Special

Ho-Ho-Home for The Holidays

Join us for a festive Holiday Dinner at Station Place, where twinkling lights and warm seasonal spirit fill the halls. The celebration begins with live holiday music from 3:00–4:00 p.m., followed by a delicious dinner shared with residents, families, and staff. Tickets can be purchased at the reception desk during regular hours, and we encourage families to reserve early as seating is limited. We look forward to sharing this special, joy-filled evening with you!





Special Notice

Public Educator visiting from the Alzheimer's Society on January 8th, 2027.

Promoting Everyday Prevention:

Station Place has a plethora of hand hygiene stations available throughout the home. We encourage residents and family members to conduct hand hygiene frequently, and staff are audited to ensure proper compliance is being met.

We encourage respiratory etiquette in our homes. This looks like residents, staff members, and families covering their coughs and sneezes and avoiding visiting if you're feeling unwell.

Remember; simple habits are key to preventing the spread of illness!



Residents' Rights

**Residence Mission Statement**

AON Long-Term Care homes are dedicated to creating a "new tradition of long-term care" by combining a comfortable environment with flexible programs tailored to individual needs. We will provide a home-like environment that promotes the maximum independence, dignity, safety, and wellness of every one of our residents.

Values:

Choices: Our commitment is to treat every resident as an individual. We recognize the right of each resident to make decisions about their own care and we encourage individual control over the choices encountered in daily life.

Holistic Care: We will provide a range of services to care for the whole person: mind, body and spirit. "Wellness" is more than just attending to physical care needs, it means fulfilling emotional and spiritual needs as well. We will emphasize what our residents can do -- not what they can't do -- in striving to achieve optimum independence and wellness.

Involving Families: We understand the importance of family involvement and welcome family participation in every aspect of our residents' lives.

Courtesy and Respect: We will demonstrate the highest standards of courtesy and customer service excellence in every interaction with residents, their families, fellow employees, and members of the community. At all times we will treat our residents, and each other, with respect.



Meet Our Management Team

We're proud to introduce some of the compassionate professionals who will be supporting our residents, family, and staff every day:



Michael O'Keeffe –
Administrator



Angel Dexter –
Behavioural Supports
Coordinator



Joanne Elliott –
Director of Resident
and Family Services



Tori McEwen – Director
of Care



Sarah Reesor –
Infection
Prevention and
Control Lead



Laurie Shoemaker –
PSW Supervisor



Amanda Appelman –
Associate Director of Care



Emily Gerow – Life
Enrichment
Coordinator



Kyla Brown – Life
Enrichment Coordinator



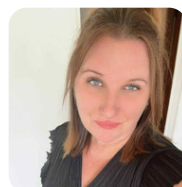
Sarah Vos – Director of
Dietary Services



Candace Ball –
Office Manager



Laurie Martin –
Environmental Services
Supervisor



Cortni Buchholz – Social
Service Worker



Melanie Morrison –
Clinical Assessment
Coordinator



Avneet Kaur –
RAI Coordinator

We are so excited to welcome our residents and their loved ones! We are committed to making our residents feel comfortable and truly home here at Station Place LTC.

Warmly,
The Station Place Team



Stay Connected

Have a question? Want to share feedback or ideas?

Follow us on Facebook: **Station Place Long Term Care Home**

Or contact us using the information below:

628 OLD NORWOOD RD, HAVELOCK, ON, K0L 1Z0

705-740-1690